

Гибкие наборы направляющих изображения

Технические характеристики

По вопросам продаж и поддержки обращайтесь:

Алматы (727)345-47-04
Ангарск (3955)60-70-56
Архангельск (8182)63-90-72
Астрахань (8512)99-46-04
Барнаул (3852)73-04-60
Белгород (4722)40-23-64
Благовещенск (4162)22-76-07
Брянск (4832)59-03-52
Владивосток (423)249-28-31
Владикавказ (8672)28-90-48
Владимир (4922)49-43-18
Волгоград (844)278-03-48
Вологда (8172)26-41-59
Воронеж (473)204-51-73
Екатеринбург (343)384-55-89

Иваново (4932)77-34-06
Ижевск (3412)26-03-58
Иркутск (395)279-98-46
Казань (843)206-01-48
Калининград (4012)72-03-81
Калуга (4842)92-23-67
Кемерово (3842)65-04-62
Киров (8332)68-02-04
Коломна (4966)23-41-49
Кострома (4942)77-07-48
Краснодар (861)203-40-90
Красноярск (391)204-63-61
Курск (4712)77-13-04
Курган (3522)50-90-47
Липецк (4742)52-20-81

Магнитогорск (3519)55-03-13
Москва (495)268-04-70
Мурманск (8152)59-64-93
Набережные Челны (8552)20-53-41
Нижний Новгород (831)429-08-12
Новокузнецк (3843)20-46-81
Ноябрьск (3496)41-32-12
Новосибирск (383)227-86-73
Омск (3812)21-46-40
Орел (4862)44-53-42
Оренбург (3532)37-68-04
Пенза (8412)22-31-16
Петрозаводск (8142)55-98-37
Псков (8112)59-10-37
Пермь (342)205-81-47

Ростов-на-Дону (863)308-18-15
Рязань (4912)46-61-64
Самара (846)206-03-16
Санкт-Петербург (812)309-46-40
Саратов (845)249-38-78
Севастополь (8692)22-31-93
Саранск (8342)22-96-24
Симферополь (3652)67-13-56
Смоленск (4812)29-41-54
Сочи (862)225-72-31
Ставрополь (8652)20-65-13
Сургут (3462)77-98-35
Сыктывкар (8212)25-95-17
Тамбов (4752)50-40-97
Тверь (4822)63-31-35

Тольятти (8482)63-91-07
Томск (3822)98-41-53
Тула (4872)33-79-87
Тюмень (3452)66-21-18
Ульяновск (8422)24-23-59
Улан-Удэ (3012)59-97-51
Уфа (347)229-48-12
Хабаровск (4212)92-98-04
Чебоксары (8352)28-53-07
Челябинск (351)202-03-61
Череповец (8202)49-02-64
Чита (3022)38-34-83
Якутск (4112)23-90-97
Ярославль (4852)69-52-93

Россия +7(495)268-04-70

Казахстан +(727)345-47-04

Беларусь +(375)257-127-884

Узбекистан +998(71)205-18-59

Киргизия +996(312)96-26-47

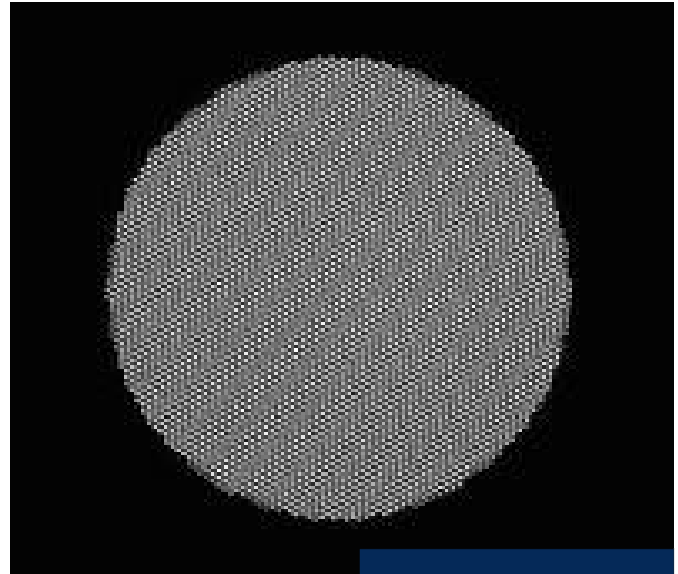
эл.почта: sqh@nt-rt.ru || сайт: <https://schott.nt-rt.ru/>

SCHOTT® Small Diameter Image Guides

Meeting market requirements for defect-free endoscopic imaging



SCHOTT® Image Guide



Close-up view of
SCHOTT® Image Bundle

Enlarged

When imaging hard-to-access locations, high-resolution flexible image bundles provide a unique solution. SCHOTT® Small Diameter Image Guides, also known as Leached Fiber Bundles (LFB), are commonly used in the medical, veterinary and industrial fields for simple and effective visualization and diagnosis. These image guides made of glass optical fibers are supplied to OEMs of endoscopes as well as to repair companies.

Main product advantages:

- From tight spaces to large area imaging, our range of diameters (from 0.45mm to 2mm) address many applications.
- Imaging resolution can be matched to intended requirements, with fiber counts from 4k to 18k possible (depending on the diameter).
- High quality design, materials and processing ensure that our quality meets or exceeds customer requirement.

SCHOTT's engineering team collaborates closely with our customers to design for a wide range of applications. We can offer highly customized and optimized solutions to meet your needs, including thin-walled sheathings, stainless-steel end tips, end coatings, fiber count/size, and more.

Your benefits:

- Maximum design flexibility
- Ease of handling and assembly
- Robust product that withstands thousands of articulations

To sum it up: we offer consistent quality and the widest variety of options in the industry.

Bundle specifications

Bundle Diameter (mm)	Length (mm)	Quality Area Diameter (mm)	Pixel Count (k)	Distal Ferrule Diameter (mm) x Length (mm)	Proximal Ferrule Diameter (mm) x Length (mm)
0.45	1000	0.38	4.0	0.55 x 4.40	0.64 x 11.80
0.53	1000 & 1050	0.45	5.6	0.65 x 4.50	1.00 x 12.00
0.57	535 – 1000	0.45	4.5	0.77 x 5.00	1.05 x 15.00
0.70	535 – 1000	0.58	8.2	0.83 x 5.00	0.94 x 12.00
1.00	670 – 1000	0.80	13.5	1.27 x 5.10 1.16 x 5.00	2.03 x 13.50 1.60 x 10.00
1.05	760	0.90	18	1.22 x 5.60	1.22 x 12.80
1.10	485 – 895	0.90	18	1.27 x 4.00	1.45 x 13.50 2.03 x 13.50
1.2	520 - 880	1.05	18	1.38 x 4.00	1.60 x 10.00
1.3	545	1.15	18	1.42 x 5.00	1.42 x 14.00
1.65	1350	1.45	18	2.19 x 7.8	2.46 x 15.00

Notes:

Low temperature sterilization ~55°C (Sterrad, ETO, Peroxide) is recommended. Not suitable for high temperature sterilization, such as dry heat or autoclave.

Our services

As a truly unique organization, SCHOTT is globally recognized for its glass material research and manufacturing expertise. We deliver vertically integrated services, including direct sales and customer support.

This raises the comfort level for our customers, allowing them direct access to the glass manufacturer as well as its technical, manufacturing, and administrative resources.

With qualified manufacturing sites in Southbridge, Massachusetts (USA), and Amatlán de los Reyes, Córdoba (Mexico), we offer dual source production, enabling stable supply to our customers.

SCHOTT® Large Diameter Image Guides

Wound Fiber Bundles (WFB)



Large Format Image Guides also known as Wound Fiber Bundles (WFB) are coherent, flexible fiber optic bundles used in applications where images must be transferred independent of outside influences over distance or from remote locations. These image guides are widely used in defense; extreme environment; remote passive viewing, and industrial applications, including: industrial remote vision systems; ordered array detectors; hazardous environment imaging, and research.

Characteristics

Large Format Image Guides can be purchased in standard configurations (see chart next page) or built with custom designed components and sheathing to fit the application.



Typical multi-leg
Image combiner (ref.)

Multi-leg

Your Advantages

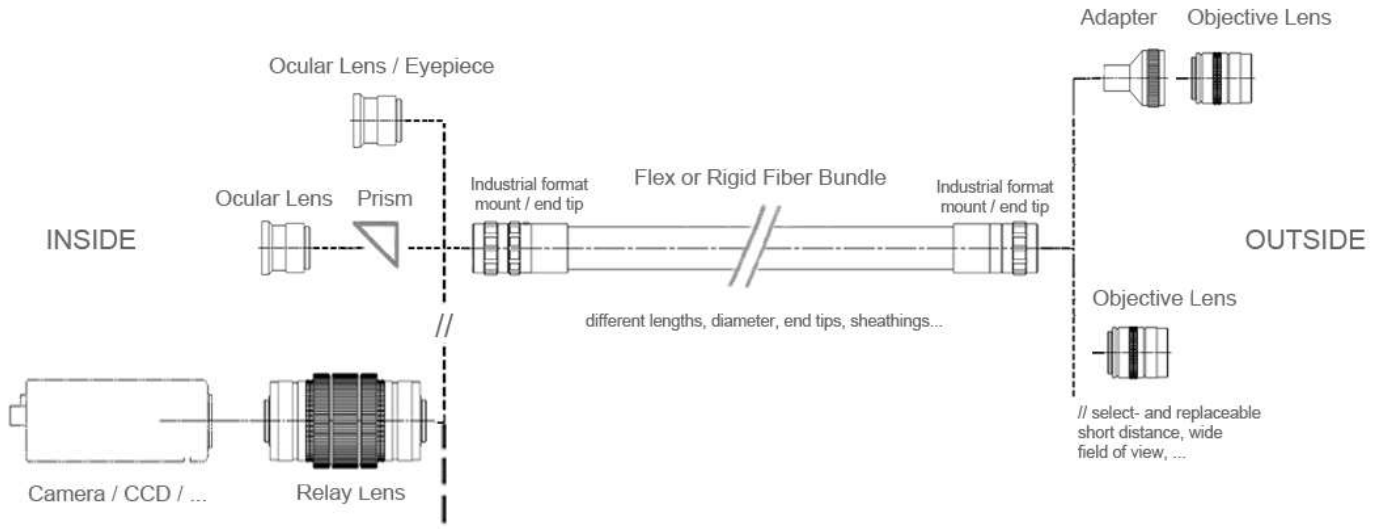
- Image size format range from 2mm² to 40 mm².
- Easily combined with a wide range of standard C-mount objective optics.
- Can be dielectric (non-conductive / non-magnetic)
- Low weight and require no power.
- Aviation- and MIL-approved.

SCHOTT can also produce custom image guide assemblies in varying vertical or horizontal formats as required to meet non-standard imaging applications.

Typical Bundle Specifications

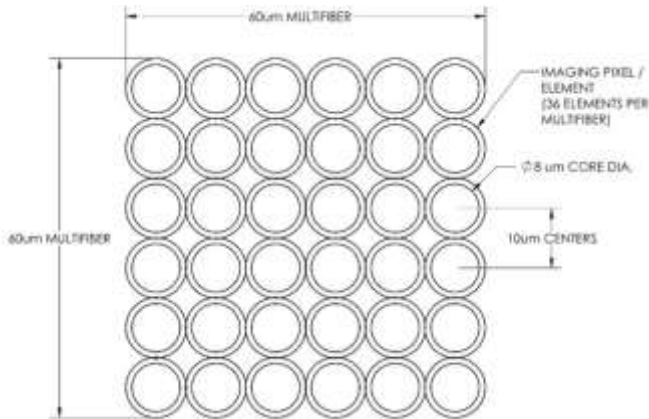
Quality (Imaging) Area:	1.8mm ² – 38x33mm with custom capabilities
Format Size:	2mm ² up to 40x35mm. Multi-leg image combining available. (see above)
Lengths	2', 3', 4', 5', 6', 7', 9', 12.5', 14' and 15 feet
Fiber Size:	10 μm elements, 6 x 6 array, 60 x 60 μm (see diagram on next page)
Numerical Aperture:	0.60 nominal
Resolution*:	Approx 45 lp/mm
Transmission:	35% avg. between 400–700nm, for a 72" Image Bundle (see chart next page)
Bending Radius:	Determined by bundle diameter and sheathing
Temperature Resistance:	-40 °C to +125 °C (-40 °F to +257 °F)
Chemical Resistance:	Dependent upon outer sheathing selection and hardware design which is resistant against oil, grease, acid, fuel, water.

Standard Image Guide Lens Configurations

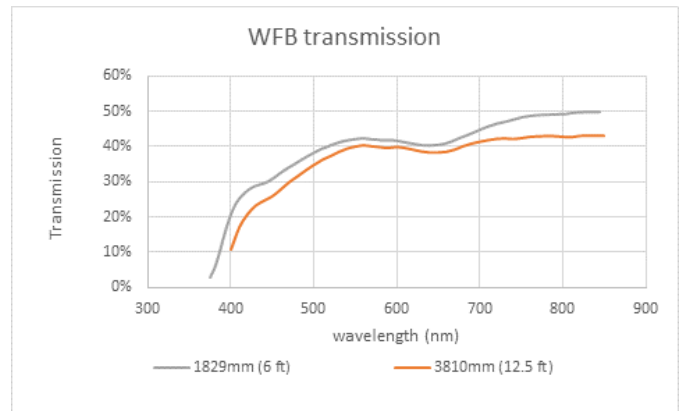


Available Lenses

Relay lenses (i.e. IG-1650) and objective lenses available upon request.



Typical multifiber construction



Typical transmission curve for various image bundle lengths

По вопросам продаж и поддержки обращайтесь:

Алматы (727)345-47-04
Ангарск (3955)60-70-56
Архангельск (8182)63-90-72
Астрахань (8512)99-46-04
Барнаул (3852)73-04-60
Белгород (4722)40-23-64
Благовещенск (4162)22-76-07
Брянск (4832)59-03-52
Владивосток (423)249-28-31
Владикавказ (8672)28-90-48
Владимир (4922)49-43-18
Волгоград (844)278-03-48
Вологда (8172)26-41-59
Воронеж (473)204-51-73
Екатеринбург (343)384-55-89

Иваново (4932)77-34-06
Ижевск (3412)26-03-58
Иркутск (395)279-98-46
Казань (843)206-01-48
Калининград (4012)72-03-81
Калуга (4842)92-23-67
Кемерово (3842)65-04-62
Киров (8332)68-02-04
Коломна (4966)23-41-49
Кострома (4942)77-07-48
Краснодар (861)203-40-90
Красноярск (391)204-63-61
Курск (4712)77-13-04
Курган (3522)50-90-47
Липецк (4742)52-20-81

Магнитогорск (3519)55-03-13
Москва (495)268-04-70
Мурманск (8152)59-64-93
Набережные Челны (8552)20-53-41
Нижний Новгород (831)429-08-12
Новокузнецк (3843)20-46-81
Ноябрьск (3496)41-32-12
Новосибирск (383)227-86-73
Омск (3812)21-46-40
Орел (4862)44-53-42
Оренбург (3532)37-68-04
Пенза (8412)22-31-16
Петрозаводск (8142)55-98-37
Псков (8112)59-10-37
Пермь (342)205-81-47

Ростов-на-Дону (863)308-18-15
Рязань (4912)46-61-64
Самара (846)206-03-16
Санкт-Петербург (812)309-46-40
Саратов (845)249-38-78
Севастополь (8692)22-31-93
Саранск (8342)22-96-24
Симферополь (3652)67-13-56
Смоленск (4812)29-41-54
Сочи (862)225-72-31
Ставрополь (8652)20-65-13
Сургут (3462)77-98-35
Сыктывкар (8212)25-95-17
Тамбов (4752)50-40-97
Тверь (4822)63-31-35

Тольятти (8482)63-91-07
Томск (3822)98-41-53
Тула (4872)33-79-87
Тюмень (3452)66-21-18
Ульяновск (8422)24-23-59
Улан-Удэ (3012)59-97-51
Уфа (347)229-48-12
Хабаровск (4212)92-98-04
Чебоксары (8352)28-53-07
Челябинск (351)202-03-61
Череповец (8202)49-02-64
Чита (3022)38-34-83
Якутск (4112)23-90-97
Ярославль (4852)69-52-93

Россия +7(495)268-04-70

Казахстан +(727)345-47-04

Беларусь +(375)257-127-884

Узбекистан +998(71)205-18-59

Киргизия +996(312)96-26-47

эл.почта: sqh@nt-rt.ru || сайт: <https://schott.nt-rt.ru/>